

SOLERA[®]

High performance insulated translucent glazing units with the quality and permanence that comes only with glass.

PRODUCT DATA

SOLERA SAMPLE DETAILS

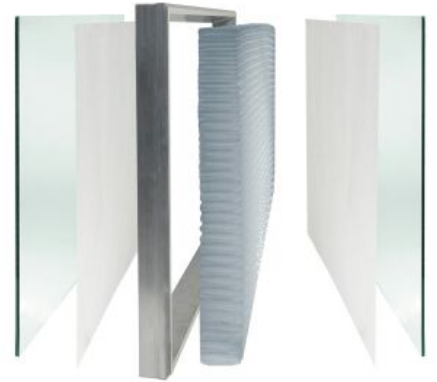
Project Name: N/A

Solera Type: Solera S R5

Unit Thickness: Nominal 3" (76mm)

Composition:

Exterior Glass:	6mm annealed
Surface 2:	Light diffusing veil
Surface 3:	Light diffusing veil
Interior Glass:	6mm annealed



Performance Parameters

Visible Light transmittance:	10%-55 %
SHGC:	0.09-0.51
SC:	0.11-0.61
U-Value:	0.2 (Btu/hr.ft ² .°F)
U-Value (SI units):	1.14 (W/m ² .K)
Light Diffusion Power:	excellent

Product Data

For additional product information visit the following website:

www.advancedglazings.com/data

There you will find drawings, installation instructions, warranty and more.

ADVANCED GLAZINGS LTD.

P.O. Box 1460
Station A
Sydney, NS, Canada
B1P 6R7

Tel. 902.794.2899
Fax. 902.794.1869
info@advancedglazings.com
www.advancedglazings.com