

SOLERA[®]

High performance insulated translucent glazing units with the quality and permanence that comes only with glass.

PRODUCT DATA SHEETS

SOLERA SAMPLE DETAILS

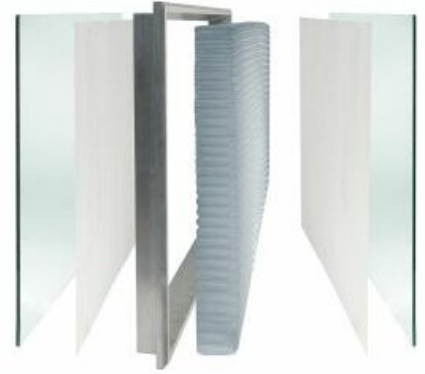
Project Name: N/A

Solera Type: T plus Lumira

Unit Thickness: Nominal 3" (76mm)

Composition:

Exterior Glass: 6mm annealed Clear
Surface 2: Light diffusing veil
Surface 3: Light diffusing veil
Interior Glass: 6mm annealed Clear



Performance Parameters

Visible Light transmittance: 7-32 %
SHGC/G-Value: 0.07-0.30
SC: 0.08-0.36
U-Value: 0.055 (Btu/hr-ft²-°F)
U-Value (SI units): 0.31 (W/m²-K)
Light Diffusion Power: excellent

Product Data

For additional product information visit the following website:

www.advancedglazings.com/data

There you will find drawings, installation instructions, warranty and more.

ADVANCED GLAZINGS LTD.

P.O. Box 1460 Tel. 902.794.2899

Station A Fax. 902.794.1869

Sydney, NS info@advancedglazings.com

B1P 6R7 www.advancedglazings.com