

SOLERA[®]

High performance insulated translucent glazing units with the quality and permanence that comes only with glass.

PRODUCT DATA SHEETS

SOLERA SAMPLE DETAILS

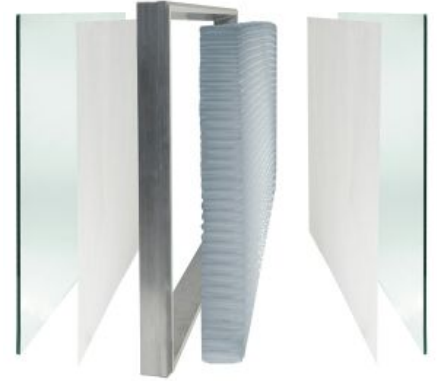
Project Name: N/A

Solera Type: Solera plus Lumira R9

Unit Thickness: Nominal 1.75" (44mm)

Composition:

Exterior Glass:	6mm annealed Clear
Surface 2:	Light diffusing veil
Surface 3:	Light diffusing veil
Interior Glass:	6mm annealed Clear



Performance Parameters

Visible Light transmittance:	9%-40%
SHGC/G-Value:	0.09-.37
SC:	0.10-.44
U-Value:	0.11 <small>(Btu/hr-ft²-°F)</small>
U-Value (SI units):	0.61 <small>(W/m²-K)</small>
Light Diffusion Power:	excellent

Product Data

For additional product information visit the following website:

www.advancedglazings.com/data

There you will find drawings, installation instructions, warranty and more.

ADVANCED GLAZINGS LTD.

P.O. Box 1460 Tel. 902.794.2899

Station A Fax. 902.794.1869

Sydney, NS info@advancedglazings.com

B1P 6R7 www.advancedglazings.com