

# SOLERA<sup>®</sup>

High performance insulated translucent glazing units with the quality and permanence that comes only with glass.

## PRODUCT DATA

### SOLERA SAMPLE DETAILS

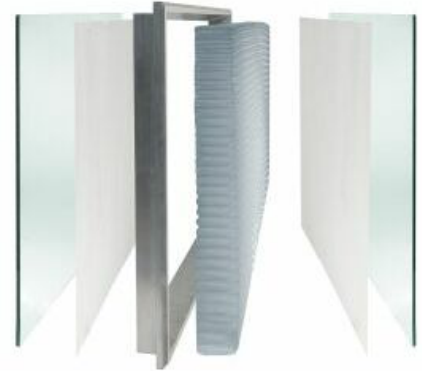
Project Name: N/A

Solera Type: Solera T R18+Aerogel

Unit Thickness: Nominal 3" (76mm)

Composition:

Exterior Glass:	6mm annealed
Surface 2:	Light diffusing veil
Surface 3:	Light diffusing veil
Interior Glass:	6mm annealed



### Performance Parameters

Visible Light transmittance:	7-32 %
SHGC/G-Value:	0.07-0.30
SC:	0.08-0.36
U-Value:	0.055 (Btu/hr-ft <sup>2</sup> -°F)
U-Value (SI units):	0.31 (W/m <sup>2</sup> -K)
Light Diffusion Power:	excellent

### Product Data

For additional product information visit the following website:

[www.advancedglazings.com/data](http://www.advancedglazings.com/data)

There you will find drawings, installation instructions, warranty and more.

ADVANCED GLAZINGS LTD.

P.O. Box 1460  
Station A  
Sydney, NS, Canada  
B1P 6R7

Tel. 902.794.2899  
Fax. 902.794.1869  
info@advancedglazings.com  
www.advancedglazings.com